

Vehicle identification numbers

Modifications are a continuing and unpublicized process in vehicle manufacturing. Your individual vehicle identification number (VIN) and major component identification numbers often are necessary to identify proper diagnostic and repair procedures, as well as correct replacement parts.

Vehicle Identification Number (VIN)

This very important identification number is stamped on a plate attached to the dashboard inside the windshield on the driver's side of the vehicle (see illustration). The VIN also appears on the vehicle certificate of title and the vehicle registration certificate. The VIN contains information such as where and when the vehicle was manufactured, the body style or trim level, the individual serial number, and most importantly, the model year and the engine code.

VIN engine and model year codes

Two very important pieces of information in the VIN are the engine code and the model year code. Counting from the left, the

engine code letter is the 8th digit, and the model year code letter is the 10th digit.

On the models covered by this manual the engine codes are:

U.....3.0L (182-cid) OHV V6
S.....3.0L (181-cid) OHC V6

On the models covered by this manual the model year codes are:

T.....1996
V.....1997
W.....1998
X.....1999
Y.....2000
1.....2001
2.....2002
3.....2003
4.....2004
5.....2005

Vehicle Certification Label

The vehicle certification label is attached to the driver's side (left front) door or door pil-

lar (see illustration). Information on this label includes the name of the manufacturer, the month and year of production, and information on the options with which it is equipped. This label is especially useful for matching the color and type of paint for repair work.

Engine identification number

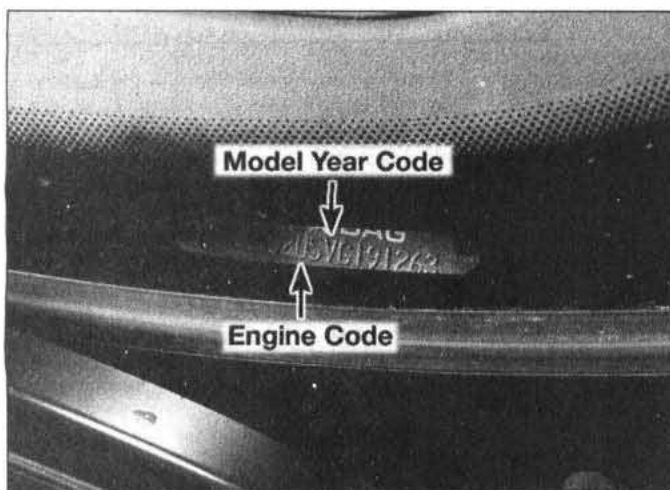
A label with the engine code and build date is on the valve cover. The engine number also is stamped on a machined pad on the outside of the engine block.

Automatic transmission identification number

The automatic transaxle ID number is on a label attached to top of the torque converter housing area of the transaxle case.

Vehicle Emissions Control Information label

This label is found in the engine compartment. See Chapter 6 for more information on this label.



The VIN is visible through the windshield on the driver's side



The Vehicle Certification label is on the driver's side door