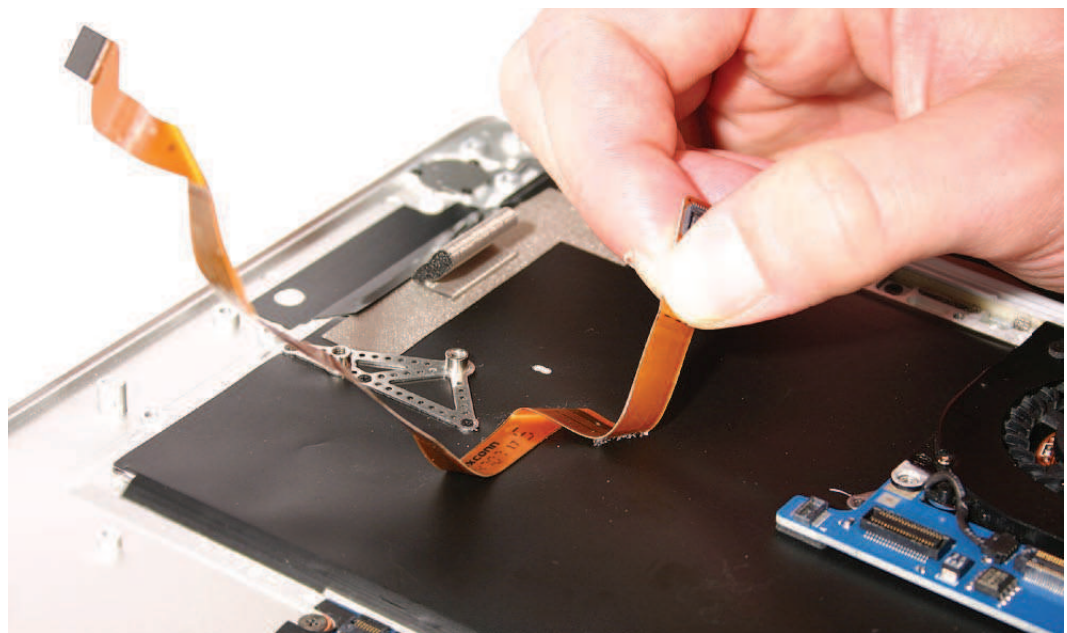
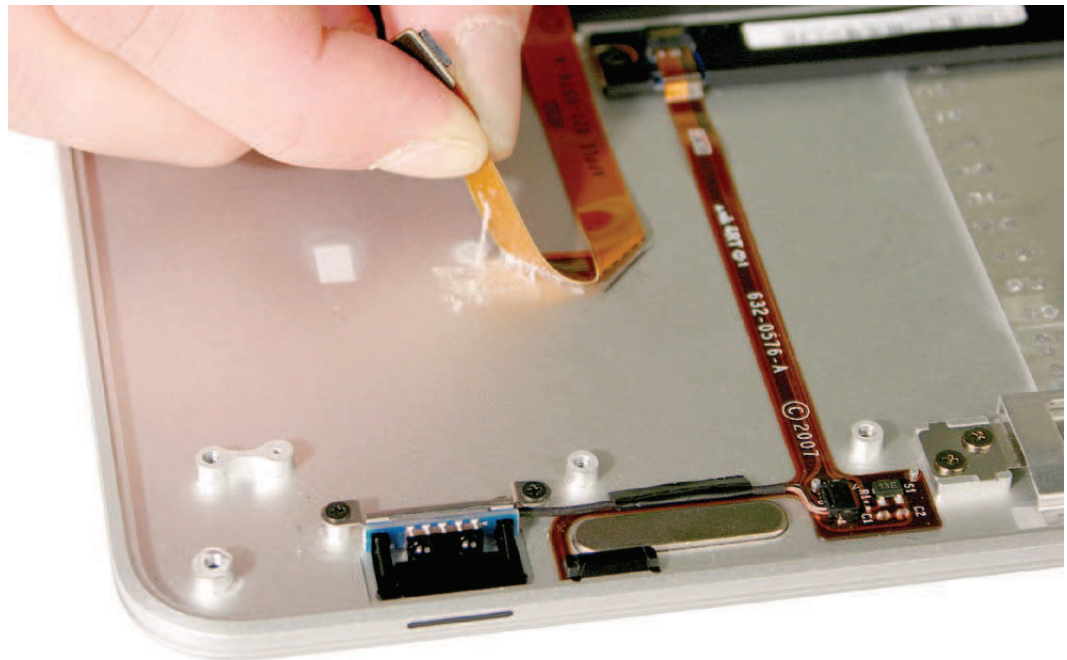


5. Slowly peel the flex cable away from the top case from each end, keeping your fingers within two inches of the point of removal to avoid twisting or stretching the cable. When reinstalling and/or transferring the flex cable, keep the adhesive on the cable intact for reuse.



Quick Test

1. Check for clear and audible sound output from the speaker.
2. Plug headphones or speakers into the analog audio jack and check for output.