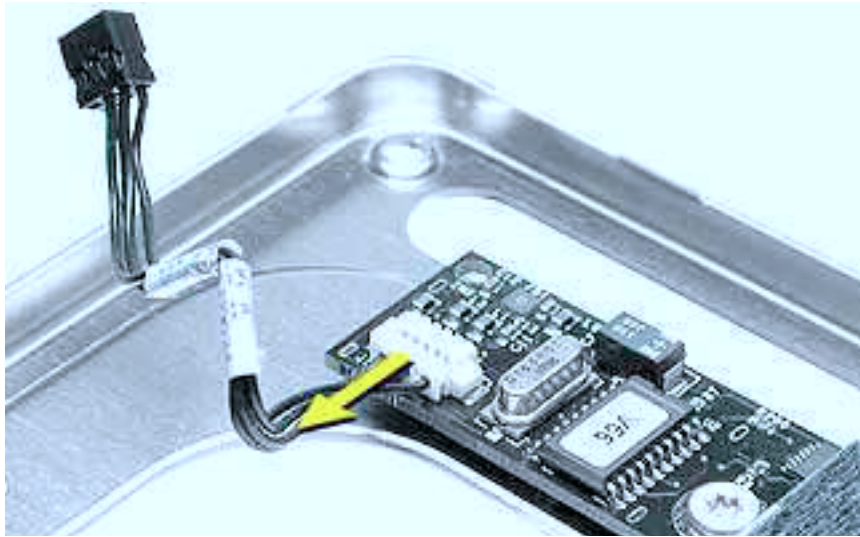
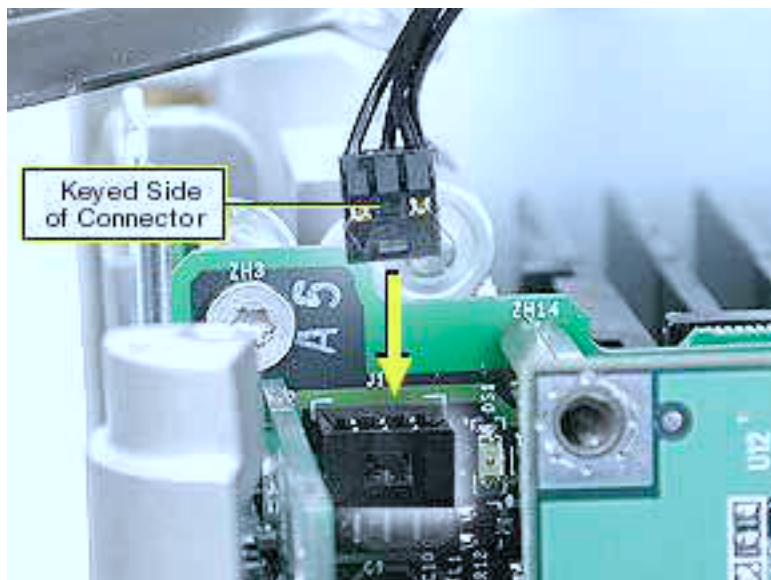


2. Disconnect the cable from the power board.



3. Connect the replacement cable to the power board on the top plate.
4. Connect the other end of the replacement cable to the J1 connector on the logic board.

Warning: To prevent damage to the power board, ensure the keyed connector fits into the J1 connector as shown.



5. Reassemble and test the computer.

Warning: Never turn on the computer unless all of its internal and external parts are in place and it is closed. Operating the computer when it is open or missing parts can damage the computer or cause injury.