

ARRANGEMENT OF THIS MANUAL

This manual is divided into 13 major sections:

- INTRODUCTION
- 1. SPECIAL TOOLS & SERVICE SPECS
- 2. INSTALLATION AND PREDELIVERY
- 3. MAINTENANCE
- 4. ELECTRICAL
- 5. IGNITION
- 6. FUEL SYSTEM
- 7. POWERHEAD
- 8. MIDSECTION
- 9. GEARCASE
- 10. MANUAL STARTER
- 11. SAFETY
- WIRING DIAGRAMS

MODELS COVERED IN THIS MANUAL

This manual covers service information on *Johnson* 9.9 through 30 HP 2-Stroke models. Use this manual together with the proper Parts Catalog for part numbers and for exploded views of the outboard, which are a valuable aid to disassembly and reassembly.

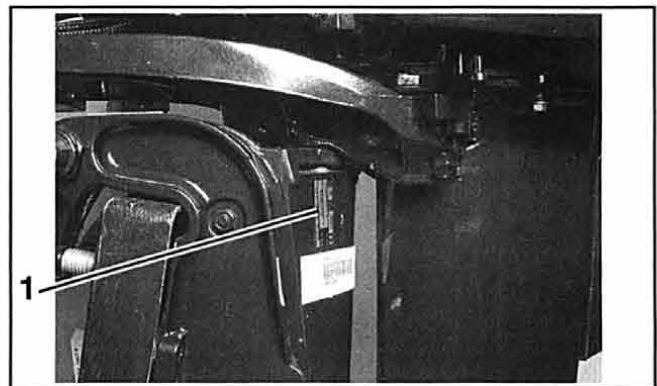
This manual presents the U.S. values and dimensions first and the metric values and dimensions second, inside parentheses ().

IDENTIFYING MODEL AND SERIAL NUMBERS

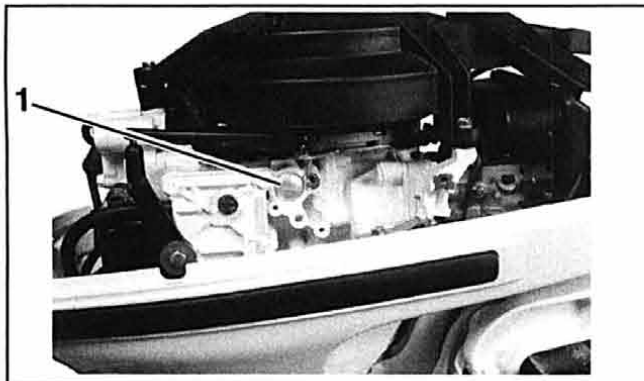
Outboard model and serial numbers are located on the swivel bracket and on the powerhead.



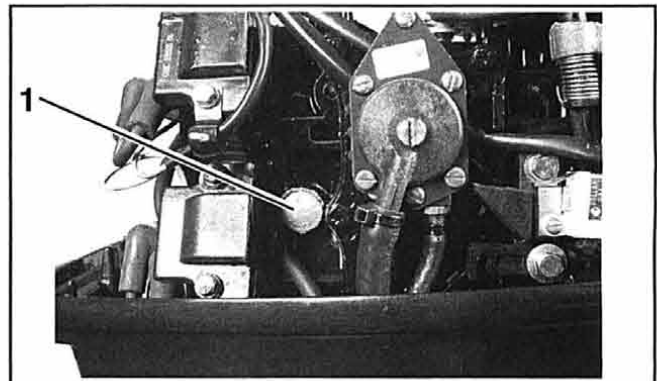
9.9/15 HP Swivel Bracket 000820
1. Model and serial number



25/30 HP Swivel Bracket 001005
1. Model and serial number



9.9/15 HP Powerhead 000821
1. Serial number



25/30 HP Powerhead 001006
1. Serial number