

## GENERAL INFORMATION

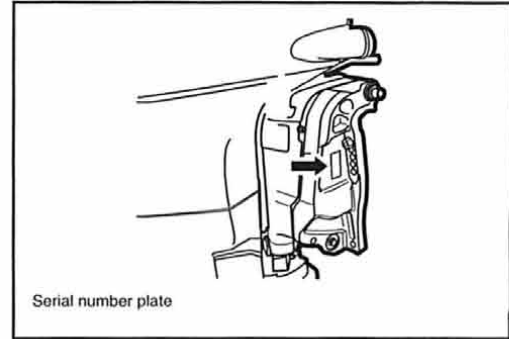
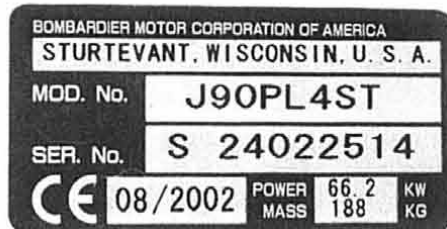
### IDENTIFICATION NUMBER LOCATION

## IDENTIFICATION NUMBER LOCATION

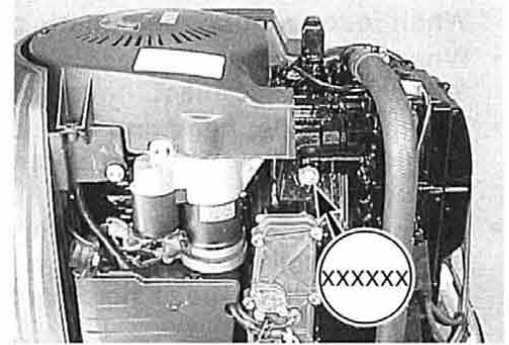
### MODEL, PREFIX, SERIAL NUMBER

The MODEL, PREFIX and SERIAL NUMBER of the motor are stamped on a plate attached to the clamp bracket.

#### Example



Typical placement example



### ENGINE SERIAL NUMBER

A second engine serial number plate is pressed into a boss on the cylinder block.

## FUEL AND OIL

### Gasoline Recommendation

Bombardier highly recommends that you use alcohol-free unleaded gasoline with a minimum pump octane rating of 87 (R+M / 2 method) or 91 (Research method). However, blends of unleaded gasoline and alcohol with equivalent octane content may be used.

Allowable maximum blend of a single additive (not combination):

5% Methanol, 10% Ethanol, 15% MTBE

#### ⚠ CAUTION

If leaded gasoline is used, engine damage may result.  
Use only unleaded gasoline.

### Engine Oil

Use only *Evinrude/Johnson* Ultra Four Stroke Oil or oils that are rated SE, SF, SG, SH, or SJ under the API (American Petroleum Institute) classification system.

The viscosity rating should be SAE 10W-40.

If an SAE 10W-40 motor oil is not available, select an alternative according to the chart at right.

#### • BREAK-IN (First 10 Hours)

Use only *Evinrude/Johnson* Four Stroke Oil or SAE 10W-40, API SE, SF, SG, SH, or SJ rating.

