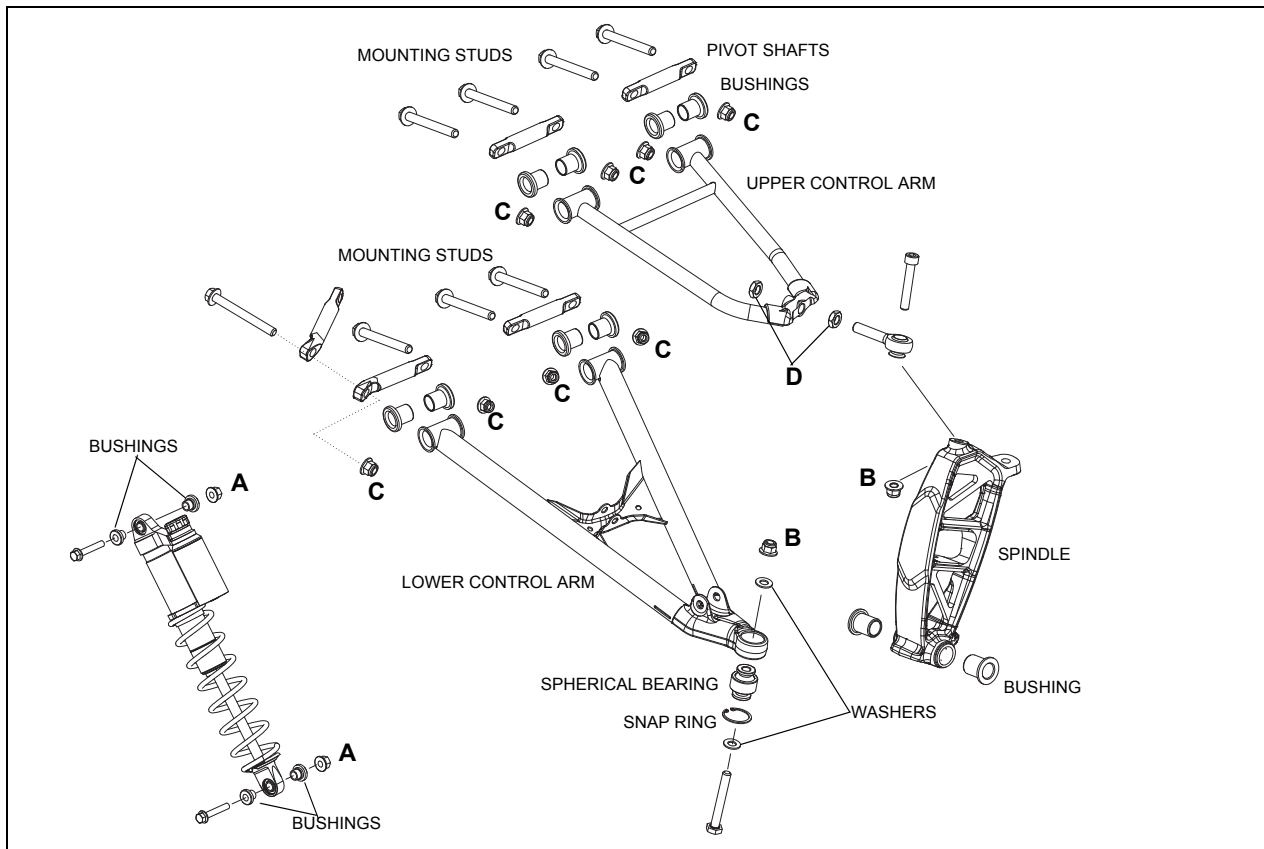


## FRONT SUSPENSION ASSEMBLY ILLUSTRATIONS

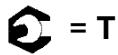
### 2010 Pro-Ride Front Control Arms



8

**CAUTION**

Never re-use lock nuts. Always re-assemble using new lock nuts.



- A: 37 ft-lb (50 Nm) (Shock Mounting Fastener Nuts)**
- B: 40 ft-lb (54 Nm)**
- C: 30 ft-lb (41 Nm)**
- D: 44 ft-lb (60 Nm) Apply Loctite® 262™ to Threads**

**NOTE: Assembly Notes**

- Orientate rod ends so they are parallel with mating component.
- Apply grease to pivot shafts during assembly.